



## IN-WALL SPEAKER DLCR525KV

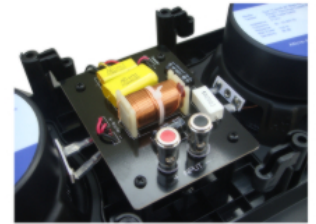
VIEW OF THE REAR SIDE OF SPEAKER SHOWING  
DENSELY RIBBED PLASTIC FRAME  
FOR SOUND REINFORCEMENT



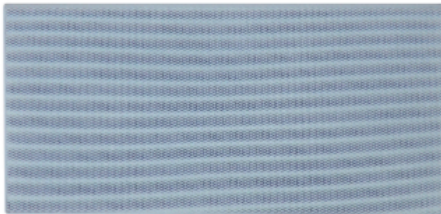
FRONT VIEW OF THE 2 X 5.25" WOOFER WITH  
KEVLAR CONE AND 1" PIVOTABLE FERROFLUID  
COOLED SILK DOME TWEETER WITH SWIVEL MOUNT



VIEW OF THE 12 dB/OCT CROSSOVER  
NETWORK WITH INPUT TERMINALS



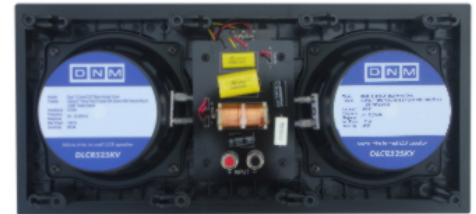
FRONT VIEW OF SPEAKER WITH SNAP  
FIT GRILLE



- 3dB, 0dB, +3dB TREBLE SWITCH BELOW TWEETER



REAR VIEW OF SPEAKER WITH LARGE WOOFER  
MAGNETS, HIGH PERFORMANCE  
CROSSOVER AND DOG EARS FOR MOUNTING



### DETAILS :

- 2 WAY SPEAKER USING 2 X 5.25" KEVLAR CONE WOOFER AND 1" PIVOTABLE FERRO FLUID COOLED SILK DOME TWEETER
- +/- 3dB TREBLE SWITCH AVAILABLE ● 100 WATT PEAK POWER SPEAKER HAVING 8 OHM IMPEDANCE
- STORAGE FRIENDLY PRESENTABLE GIFT BOX PACKING FOR EACH SPEAKER ● DOG EARS FOR EFFORTLESS IN-WALL MOUNTING
- FREQUENCY RESPONSE: 60 - 20000 Hz ● SENSITIVITY: 88 dB
- DIMENSIONS: HEIGHT - 400mm WIDTH - 195mm DEPTH - 80mm ● IN-WALL CUTOUT TEMPLATE AVAILABLE - 365mm X 157mm